

Lab/vpnbox

< [Lab](#)

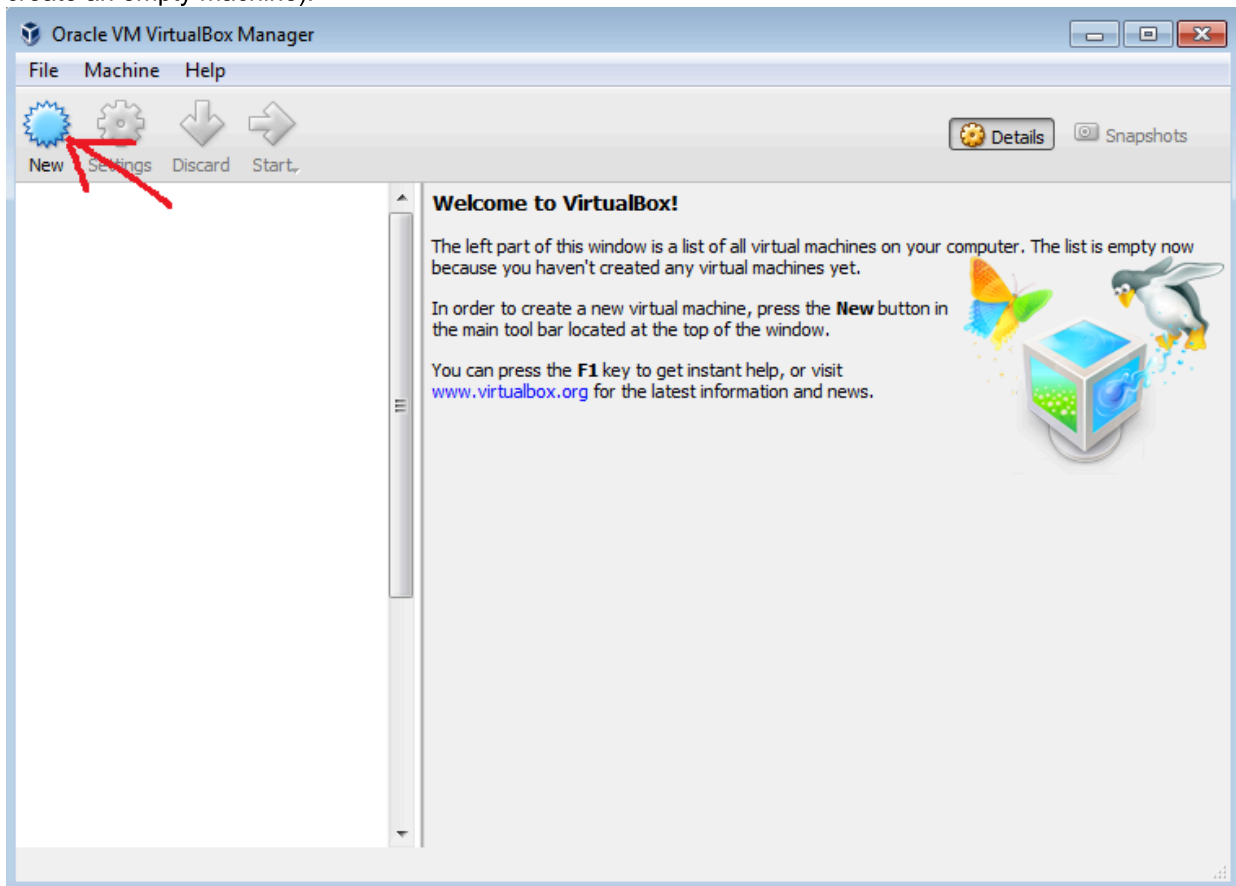
How to install vpnbox.iso image to VirtualBox

If you want to connect to the CRATE network, you have to use a vpnbox.iso image.

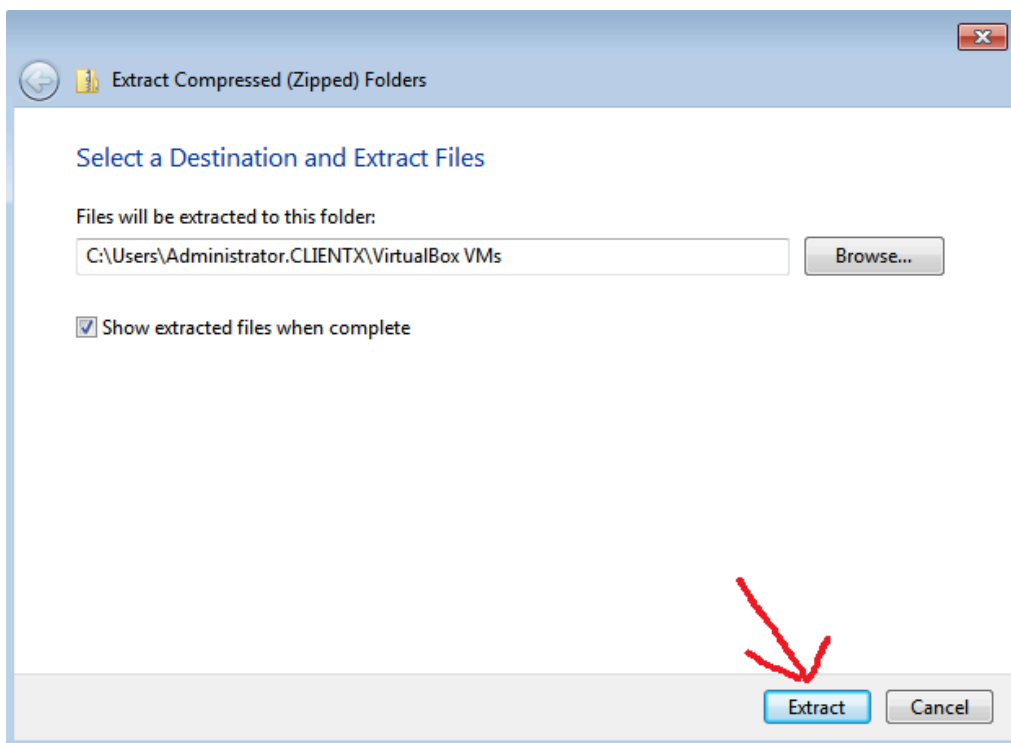
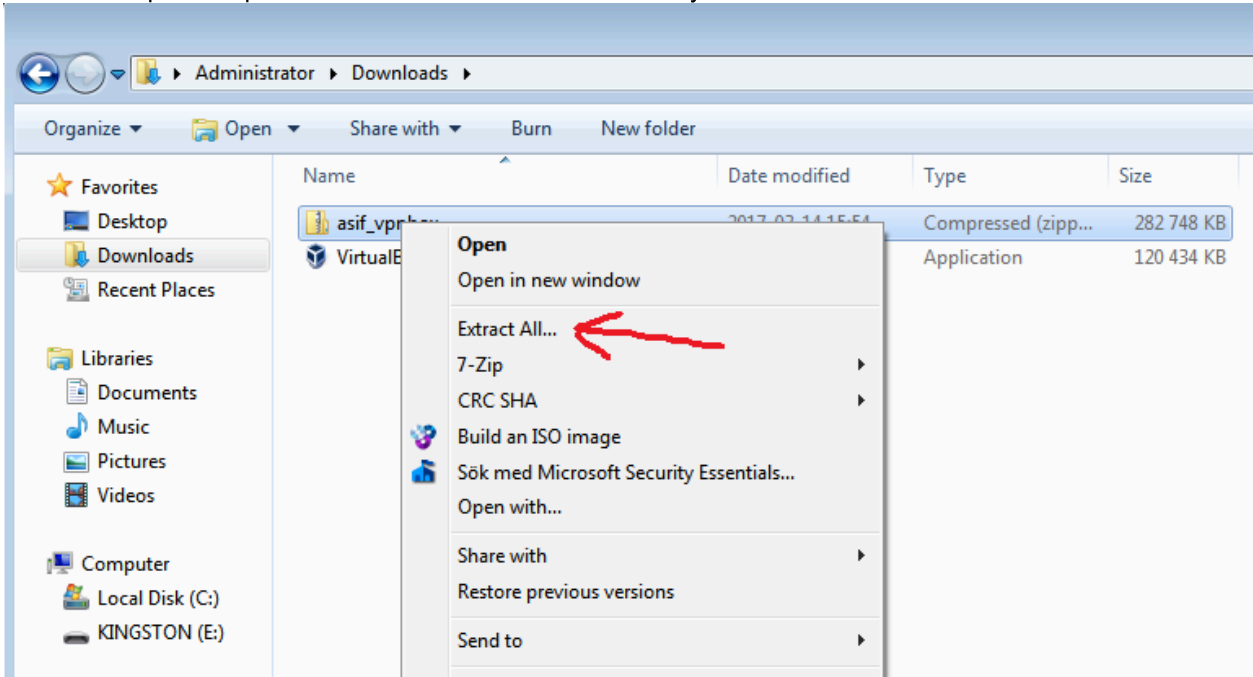
This image will boot a simple Linux machine that connects to the vpn-servers at FOI.

Then you will have virtual network inside VirtualBox where you can connect the network adapters of other operating system images.

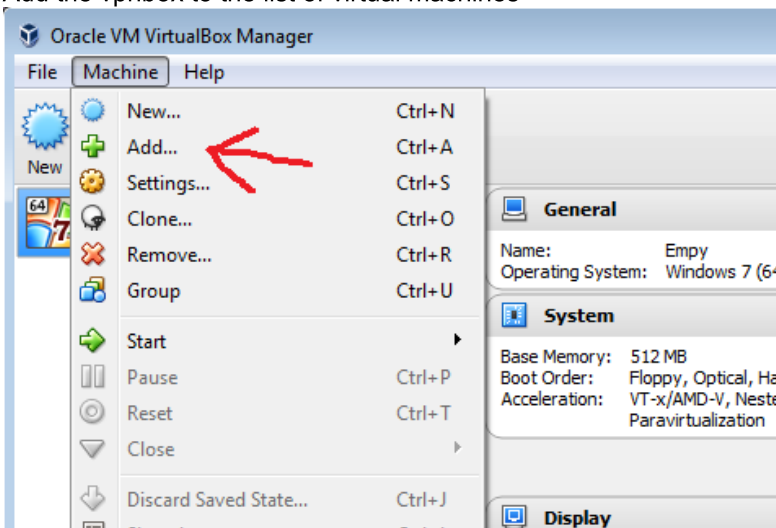
1. Install VirtualBox. You can download it from <https://www.virtualbox.org>
2. If you are missing the "VirtualBox VMs" folder in your home directory: Create a new virtual machine in VirtualBox (at least create an empty machine).



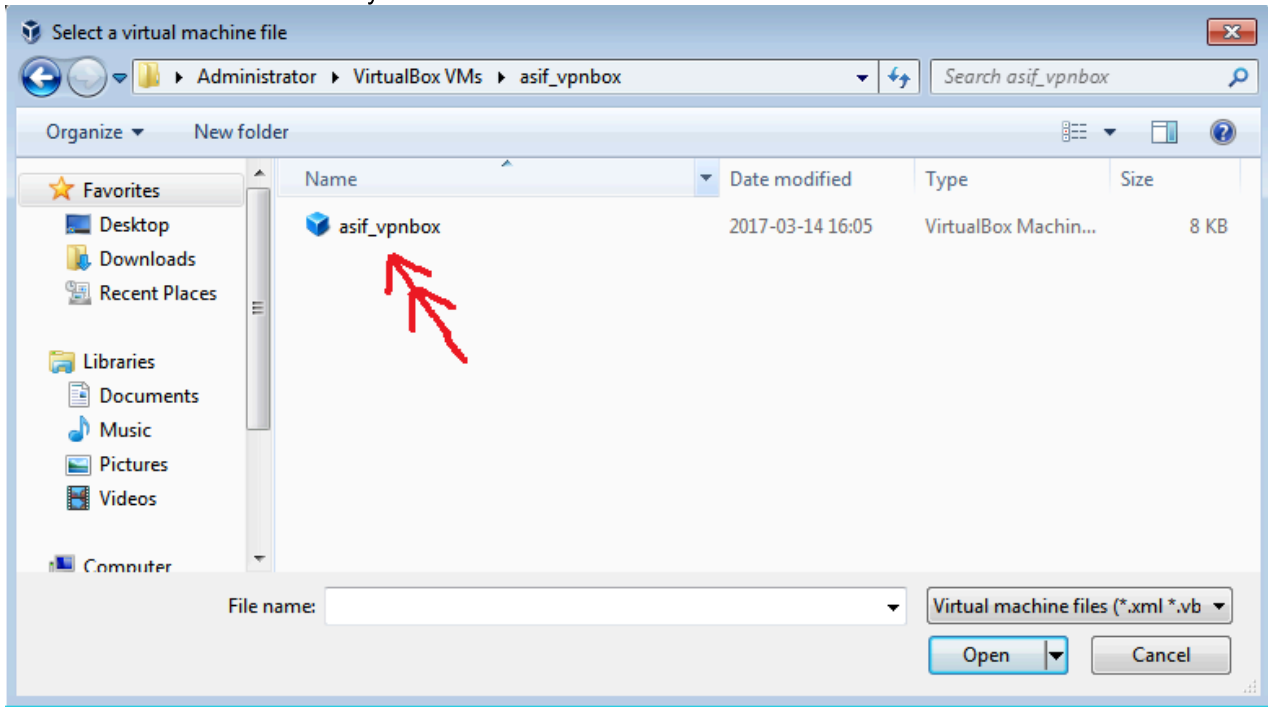
3. Extract the vpnbox.zip file into the "VirtualBox VMs" directory. It is located at %USERPROFILE%\VirtualBox VMs



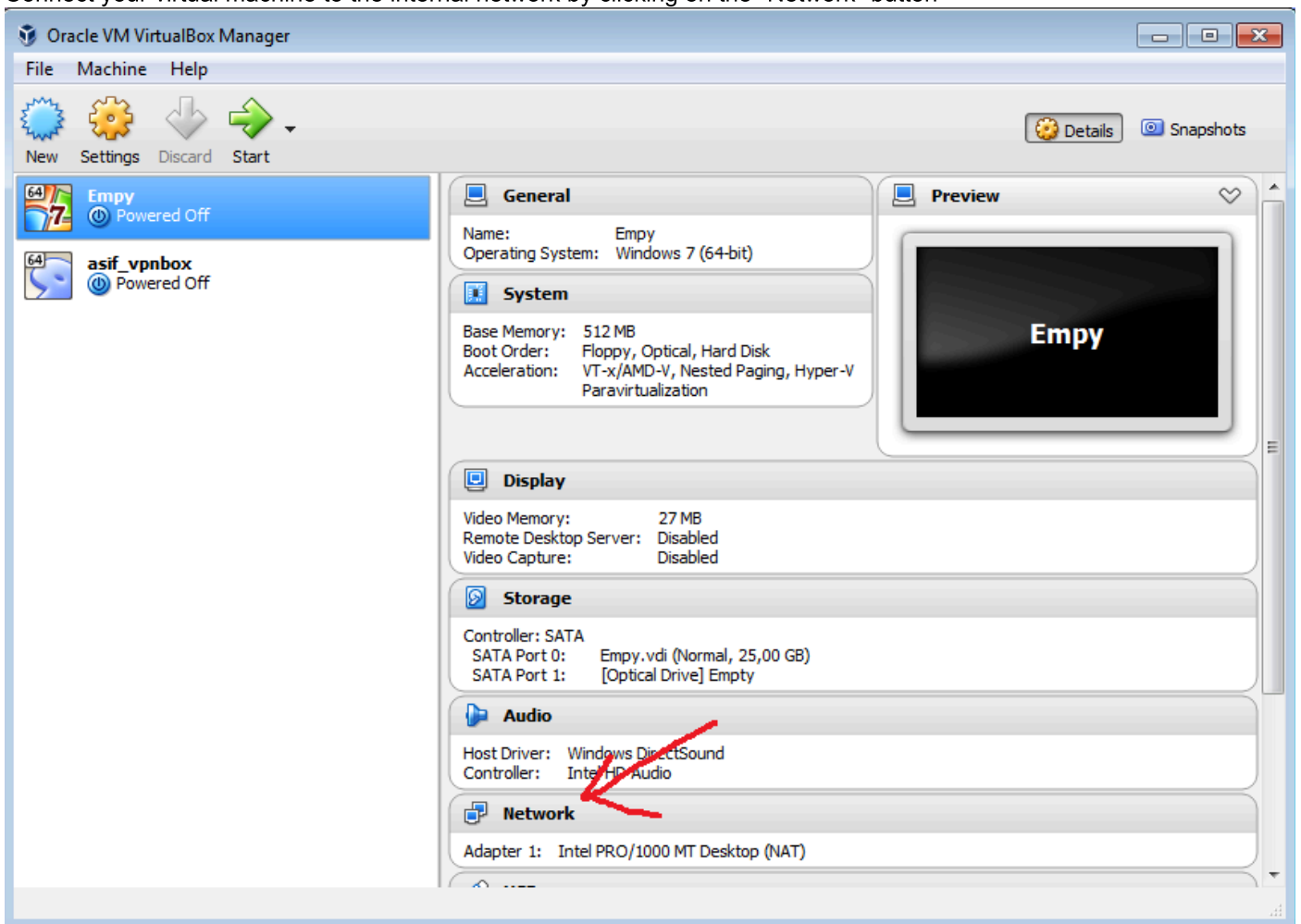
4. Add the vpnbox to the list of virtual machines



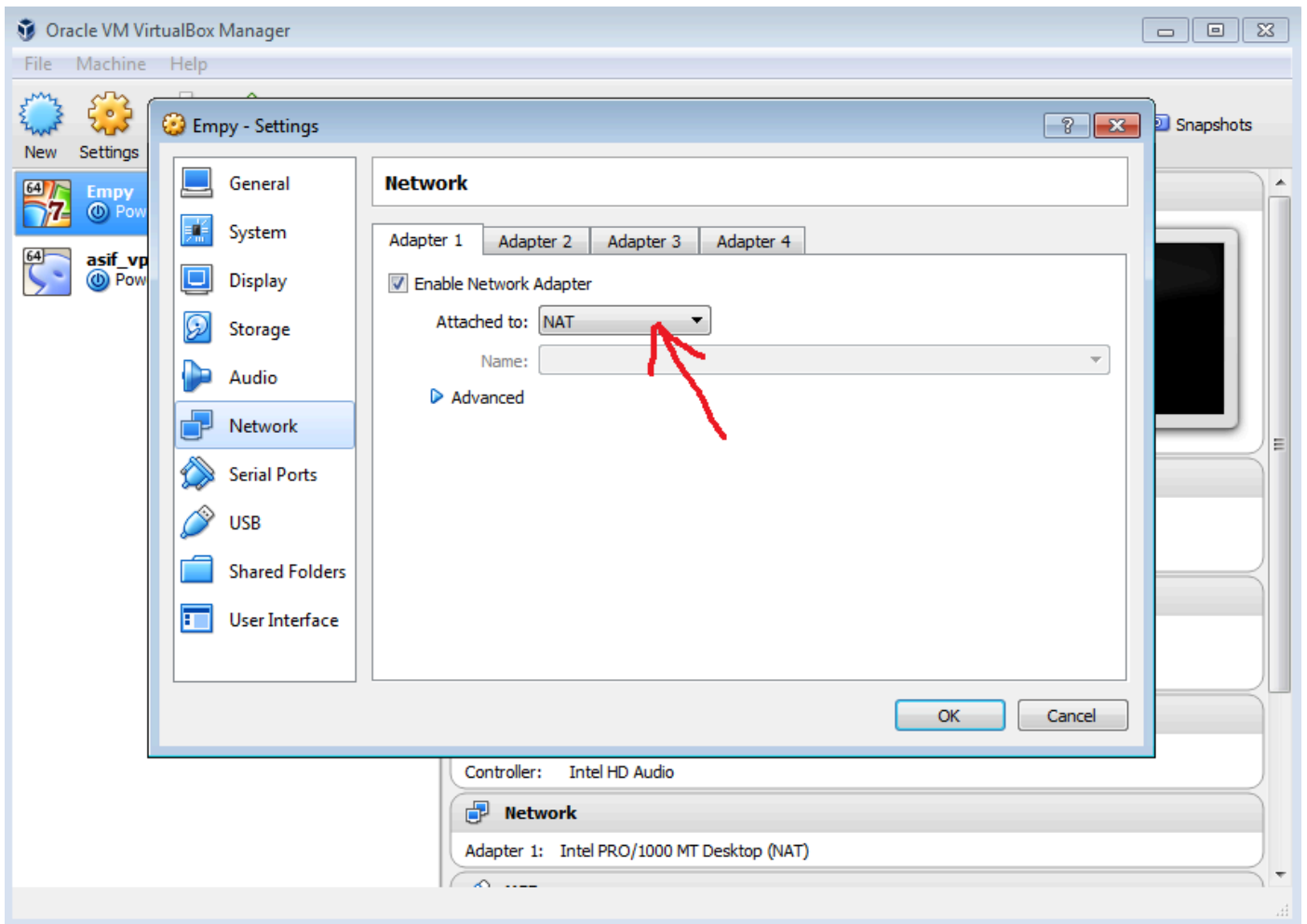
and enter the extracted directory and double click on the .vbox file



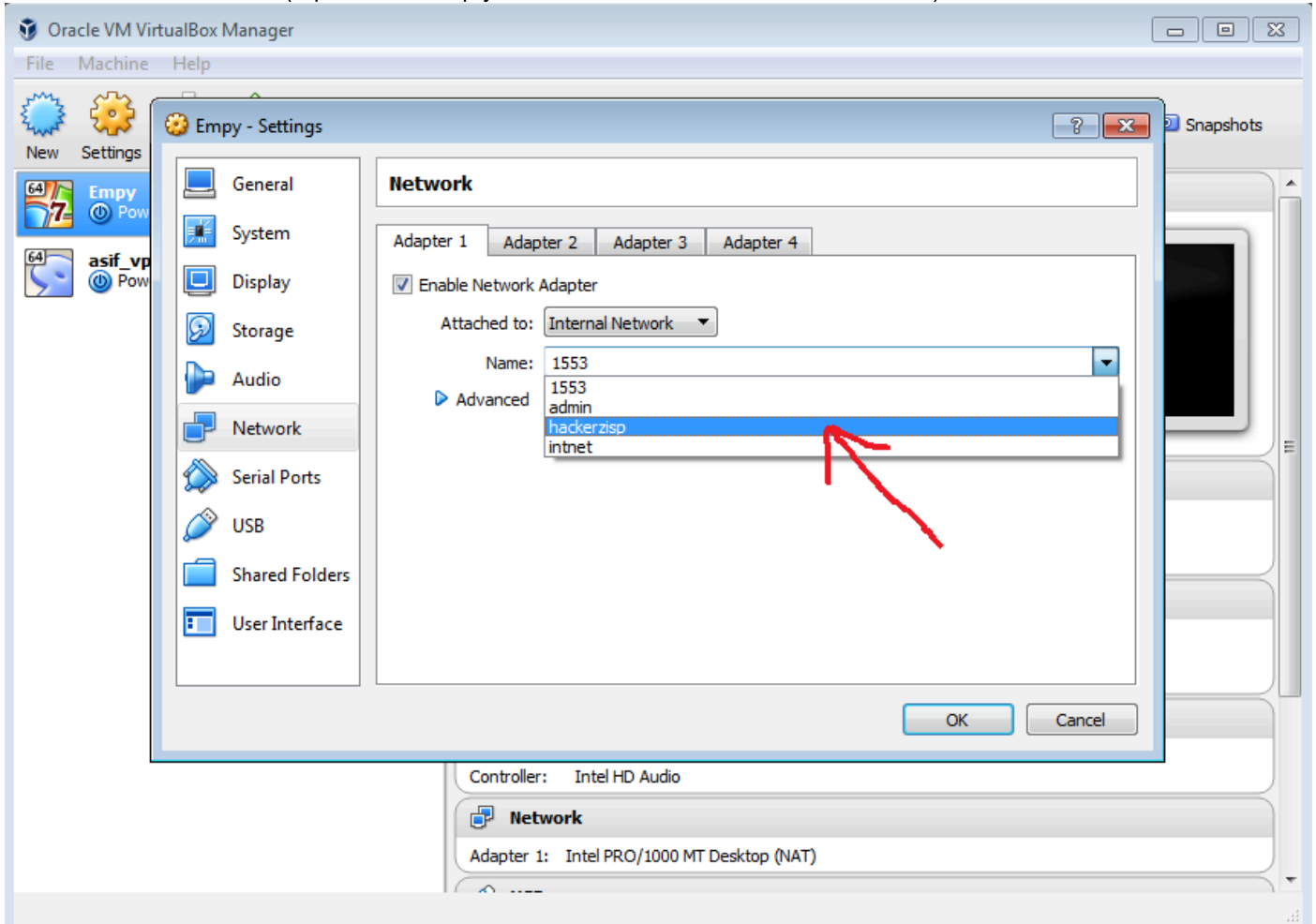
5. Connect your virtual machine to the internal network by clicking on the "Network" button



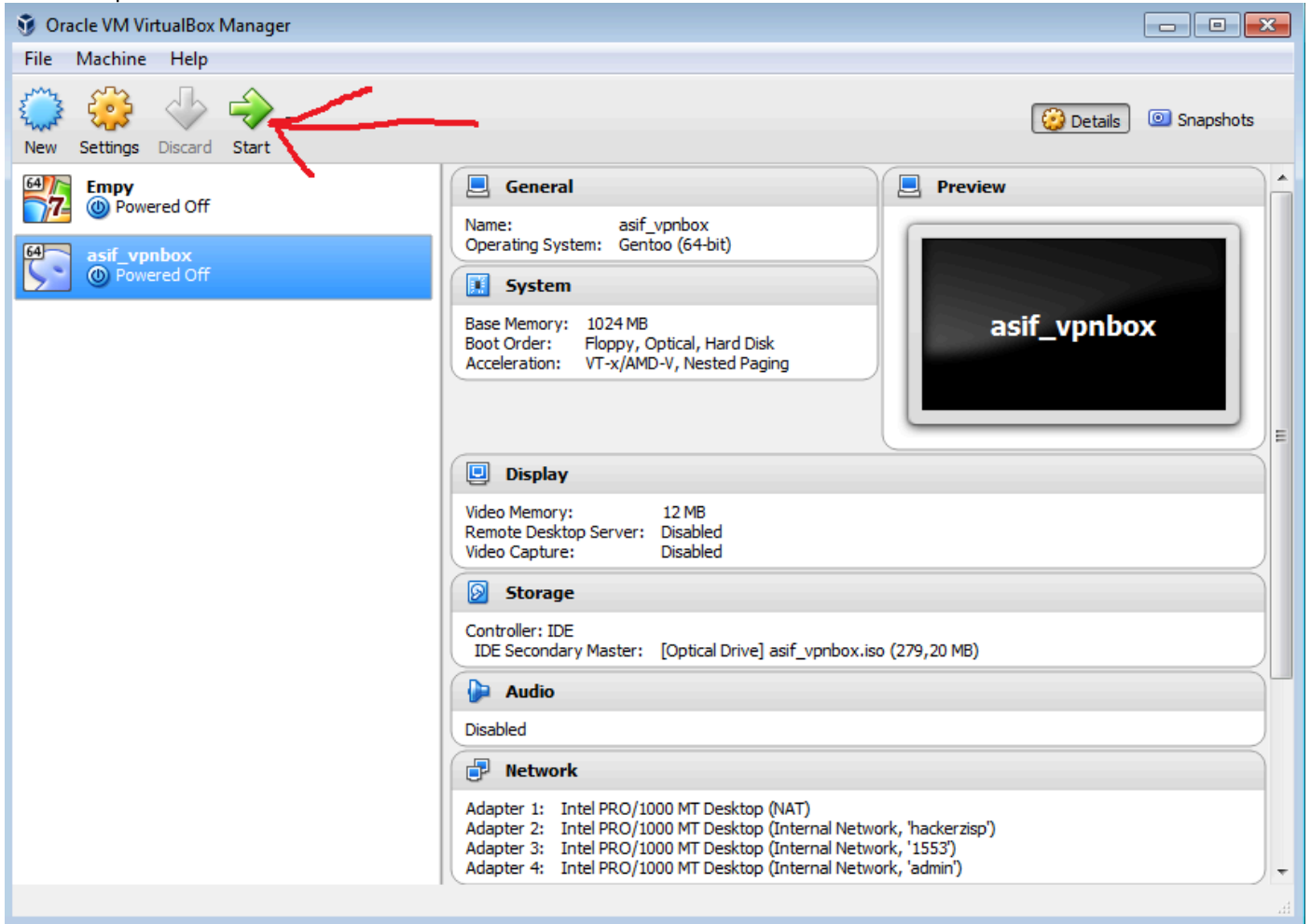
change NAT to Internal Network



and select an internal net (replace the "empty" machine with the CrateWS for instance)



6. Start the vpnbox



7. Start any of your other connected virtual machines and connect them to an internal network. Use only one network card in your connected virtual machine. This network should be connected to the internal network, or reassign it to the NAT of your local computer when you want to update it or download files. Having 2 network cards in your virtual machine will likely connect our CRATE network with Internet, and we don't want that.

Retrieved from "<https://wiki.crate.foi.se/index.php?title=Lab/vpnbox&oldid=7135>"

This page was last edited on 3 June 2025, at 15:19.